



TV and Video Accessibility on IPTV

Yuzo Oshima

Executive Director

Approved Specified Nonprofit Corporation
Japanese Organization of CS Broadcasting for People
with Disability

President Astem Co.LTD



We have been Broadcasting program
“TV Listening with Your Eyes”
for 18 years

100% Caption and Sign Language



**Communication
Satellite (CS)**

Television



Eye Dragon 3



VIDEO : “TV Listening with Your Eyes”



VIDEO: “Messages of Life -Twice as Many Persons with Disabilities Passed Away on March Eleventh-”



CONVENTION on the RIGHTS of PERSONS with DISABILITIES

[Main Page](#)

[About the
Convention](#)

[Opening for
signature](#)

[Media
Resources](#)

[United Nations
Secretariat](#)

Convention on the Rights of Persons with Disabilities

Preamble

The States Parties to the present Convention,

- a. Recalling the principles proclaimed in the Charter of the United Nations which recognize the inherent dignity and worth and the equal and inalienable rights of all members of the human family as the foundation of freedom, justice and peace in the world,
- b. Recognizing that the United Nations, in the Universal Declaration of Human



In December 2006, “Convention on the Rights of Persons with Disabilities” was adopted by the United Nations

Now, over 160 countries have ratified



International Telecommunication Union Telecommunication Standardization Sector (ITU-T)

2009 Start to discuss about accessibility
especially Media like TV

2013 Introduce our program
“TV listening with eyes”
the Great East Japan Earthquake

ITU-T

2014 the proposal of
July information accessibility on IPTV



What is IPTV?

A system through which video, image, audio and text are delivered using the Internet Protocol suite

Put simply,
**the fusion of Broadcast
and Internet or Web technology**

GOOD point of IPTV

TV remote controller

Watch from all over the world

Service for local and persons with disabilities etc.

In near future,

Shopping /Learning/Health check

ITU-T

- | | |
|----------------------|---|
| 2014
July | “Provide us accessibility service which can be provided now” |
| 2014
Oct. | Proposal to define the accessibility service of providing with IPTV |
| 2015
Nov. | Published officially as ITU-T Recommendation H.702 |

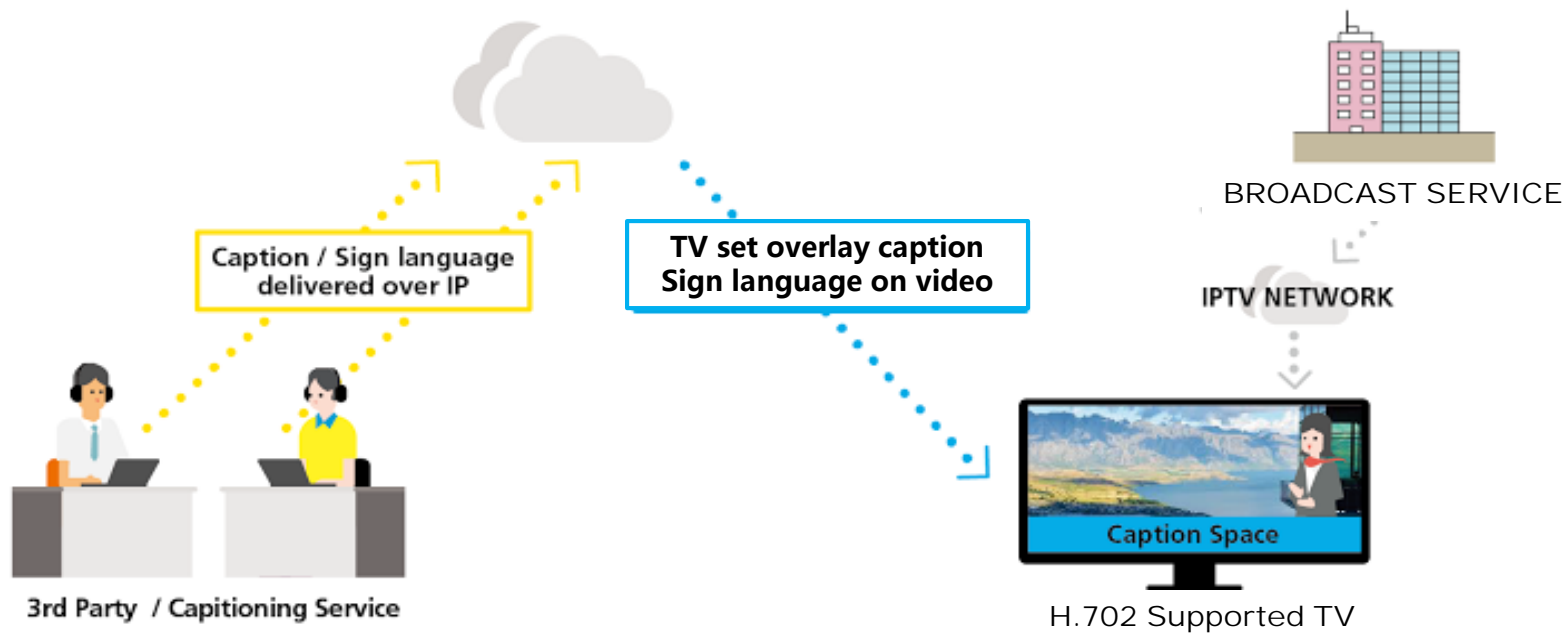


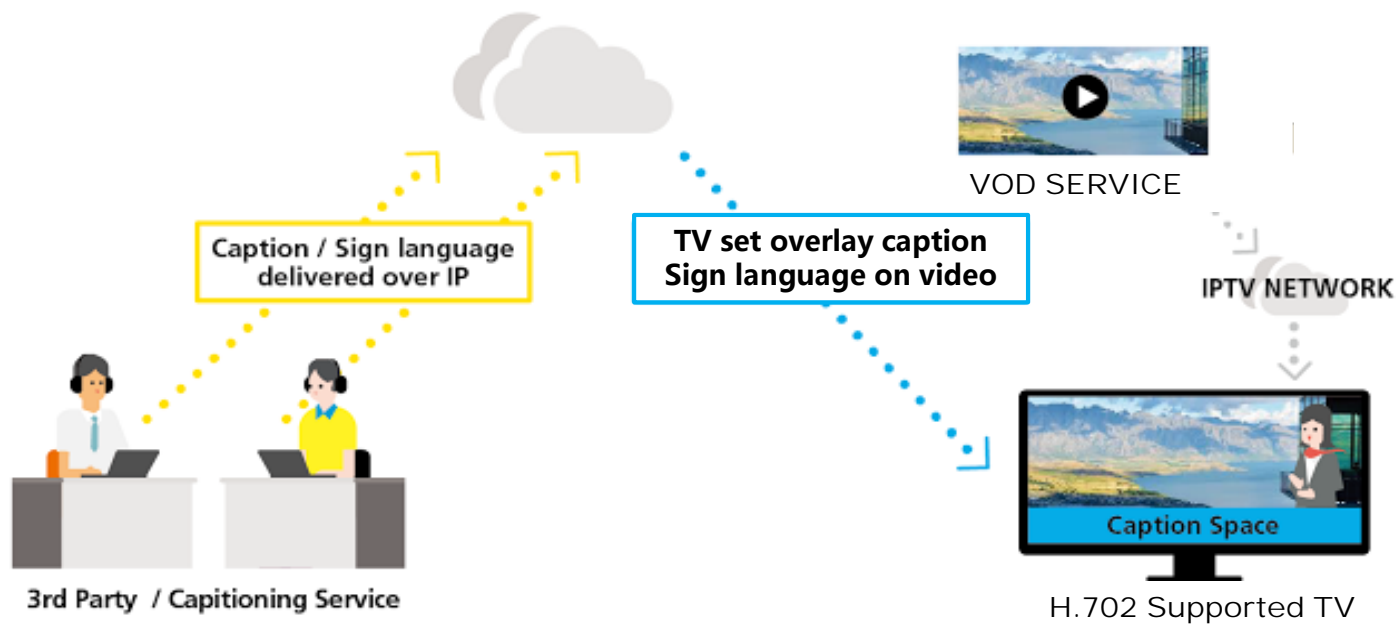
PDF:H.702



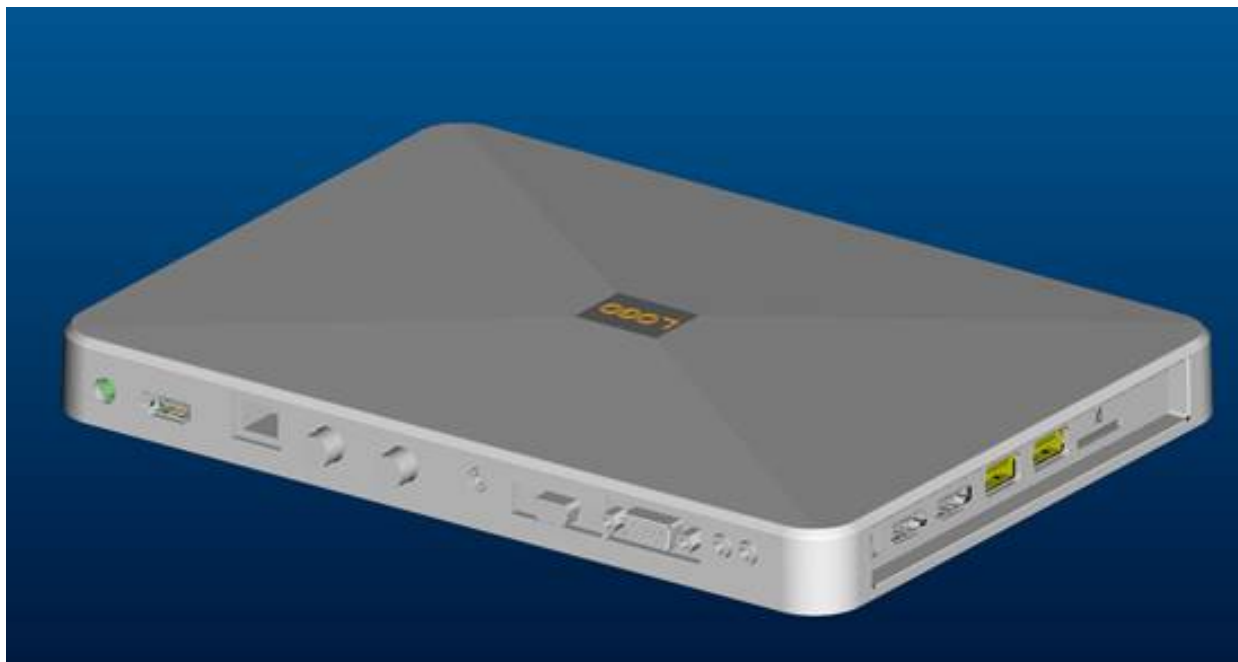
Functions of H.702

Caption	Size, color, position, background- color, multiple language
Sign language	Size, position, background color, multiple language ON/OFF sign language
Audio description	Adjust sound quality, multiple language





H.702 supported Set Top Box





March 2016, ITU-T IPTV-GSI Meeting in Tokyo

ITU-T SG16 member
gathered from about 10 countries

Regarding Accessibility,
IPTV-GSI Q26/16 discussed
“IPTV” ”Telephone rely service”



をノッたりあのテレ
計クた人あのテレ
設テあたもうのテ
にのにい改いイ
うこ発だ失とスリ
よ。開たといオ
る。際。た。い。オ
えし。実。て。い。エ。ク。ス。
使まを。つ。る。ハ。イ。で。声。
もき。一。わ。いた。ハ。イ。で。声。
方。て。シ。係。を。ま。は。は。ビ。HD
の。し。ロ。て。を。ま。は。は。ビ。HD

It will have HD voice. So high definition voice capability for communicating over the telephone. It will also have realtime

ITU-T Q2



もてこ者
 日と書
 今行る障
 、をゆをす
 がムらいま
 すウあテイ
 まシのりて
 リポ中ビし
 おん界シを
 てシ世セ討
 っな。ク検
 やうすアに
 一あいだ




 have to play that one. To use a terrible
 expression by ear. The other thing I want
 to explain to some of the --



“Beyond **2020**, the Main profile should be available in all IPTV terminal devices that are considered fully accessible.”

In **2020**, the Tokyo Olympic Games



*Beyond 2020,
Prevail IPTV and H. 702 all over the world!*

©Copyright 2016 Yuzo Oshima